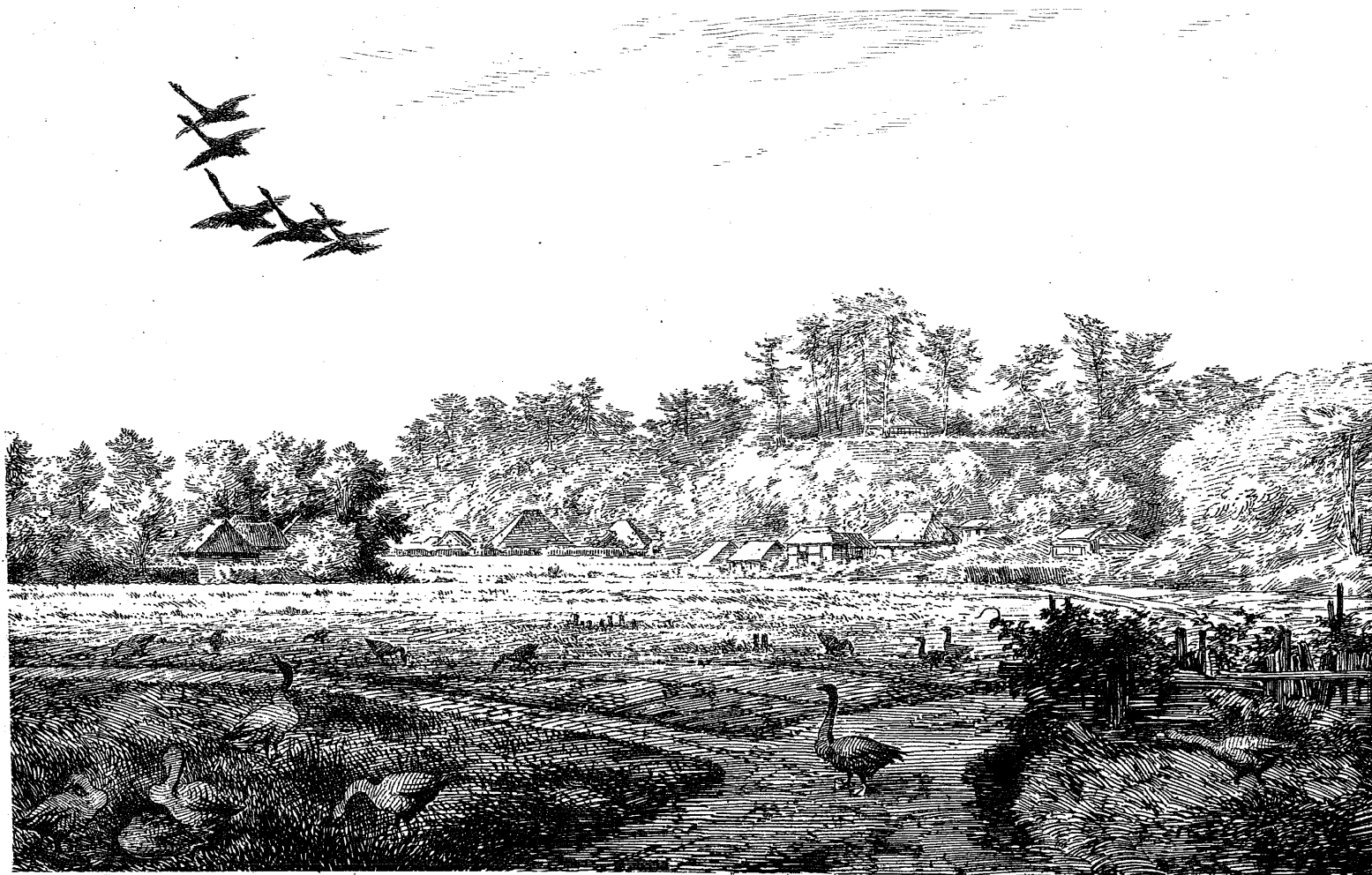


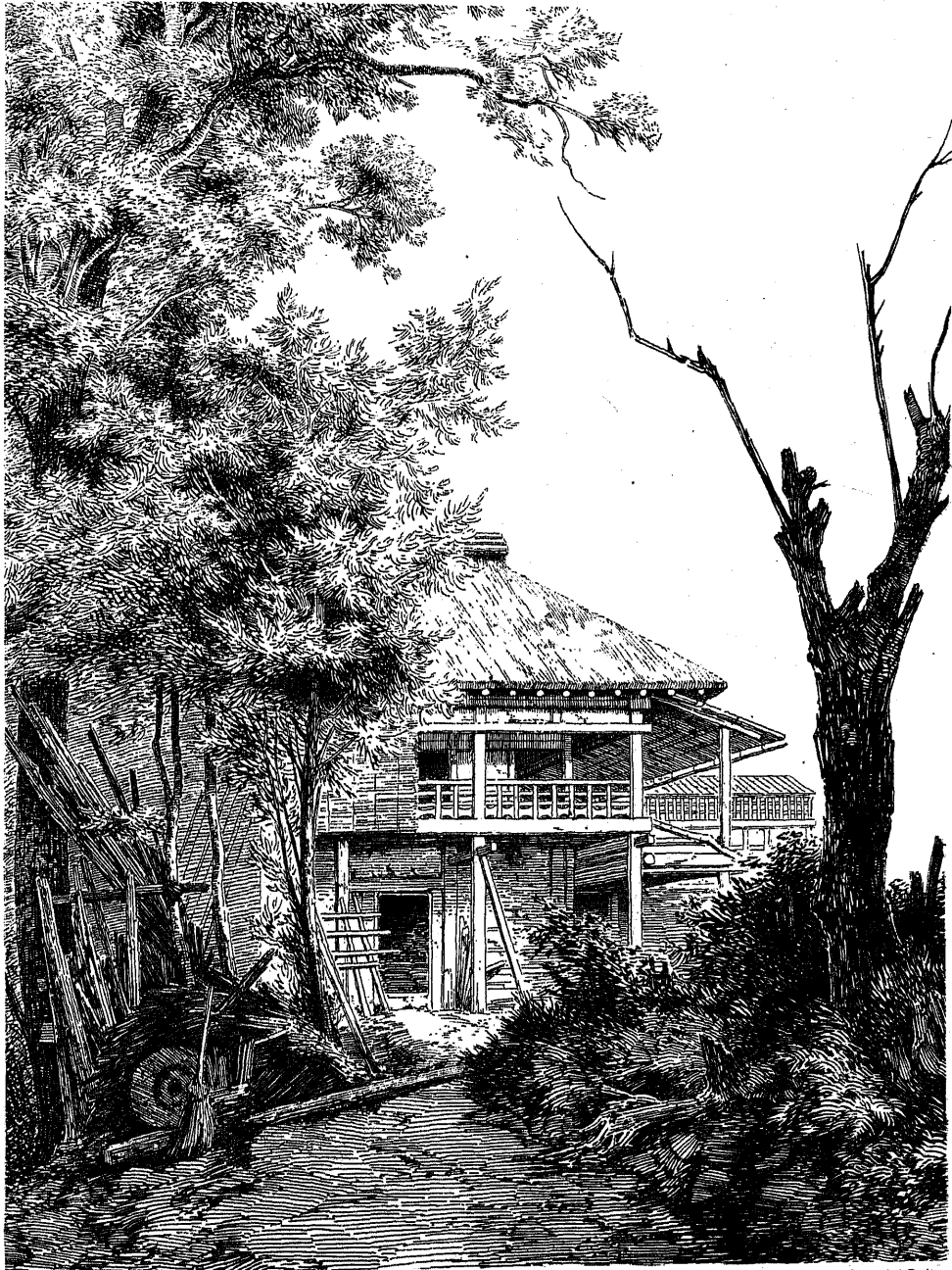
TEMPELHAIN. SENZOKO.

Photolith. Inst. v. W. Herr & Co. in Berlin.



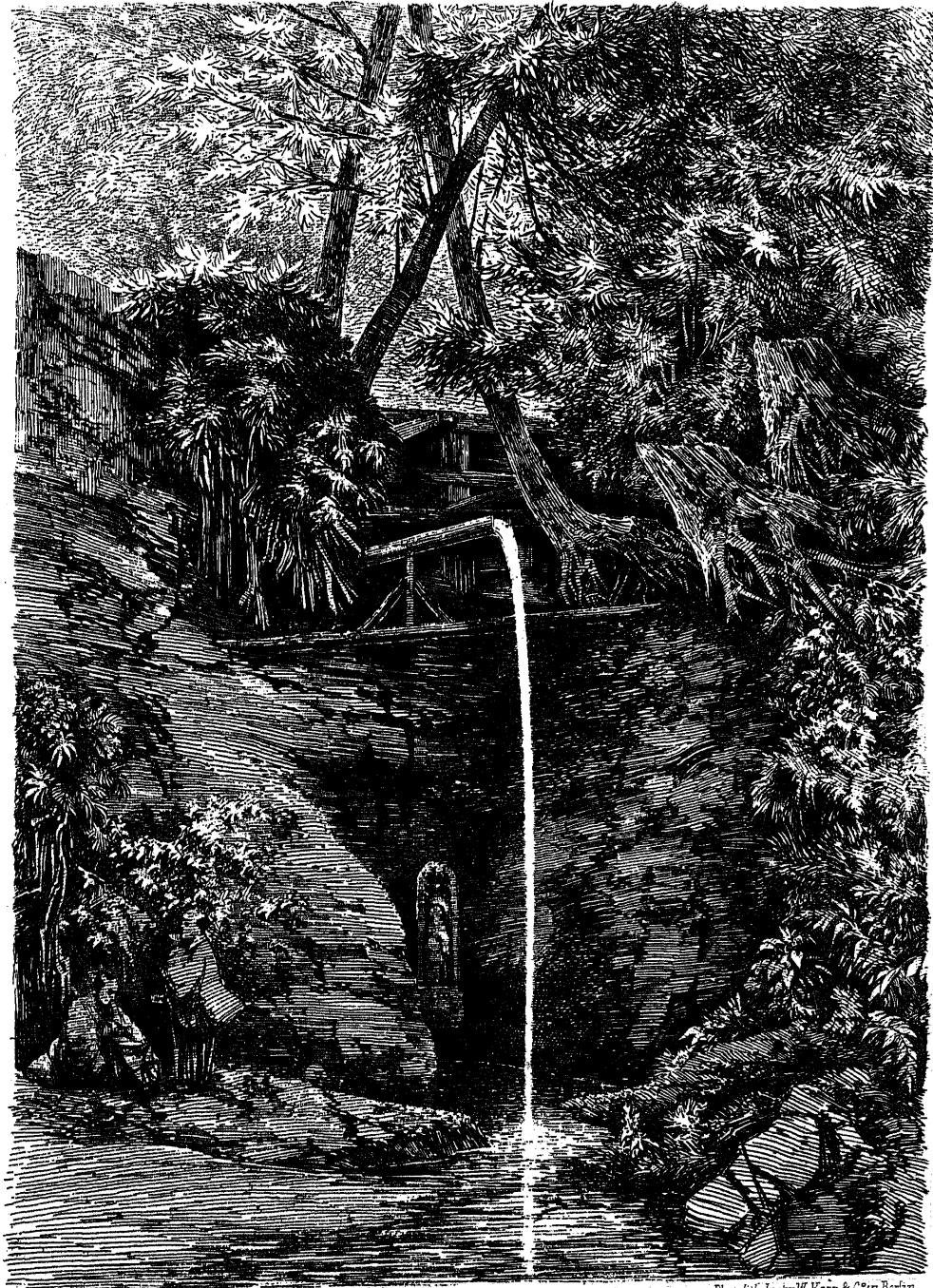
REISLAND BEI YEDDO.

Photolith. Inst. v. W. Korn & Co. in Berlin.



Photolith. Inst. v. W. Korn. & Co. in Berlin.

WIRTSCHAFTSGEBÄUDE. YEDDO.



Photolith. Inst. v. W. Korn & Co. in Berlin.

BEI ODSI.



Illustration by W. Haver, 1862, in Berlin.

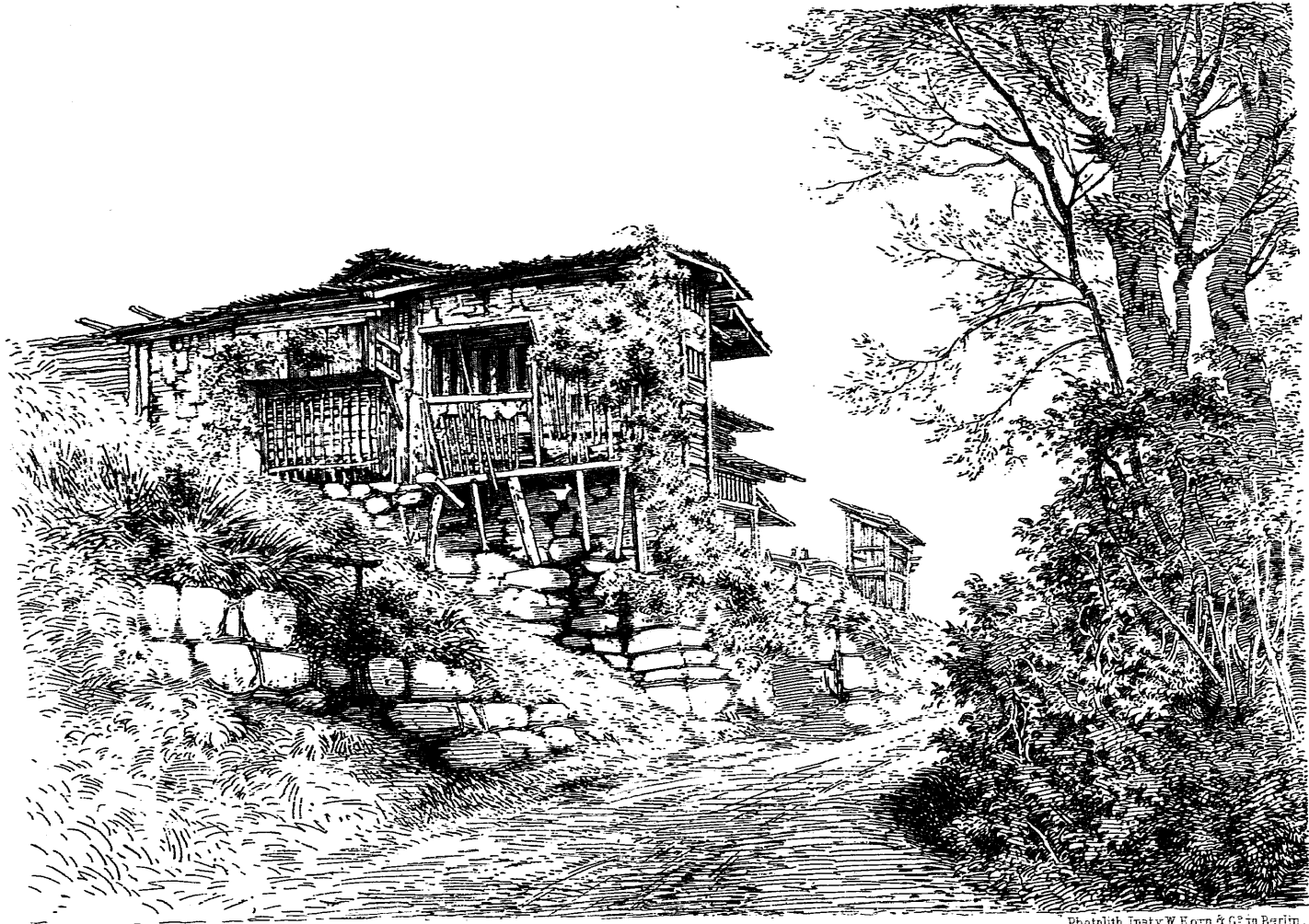
BEI NANGASAKI.



BEGRÄBNISPLATZ. WANGASAKI.

Printed by W. Korn & Co. in Berlin.





Photolith. Inst. v. W. Korn & C<sup>o</sup> in Berlin.

HÜTTE BEI NANGASAKI.



FRIEDHOF NANGASAKI.

Photolith. Inscr. v. W. Econ. & Co. in Berlin.





DESIMA.

NANGASAKI



